

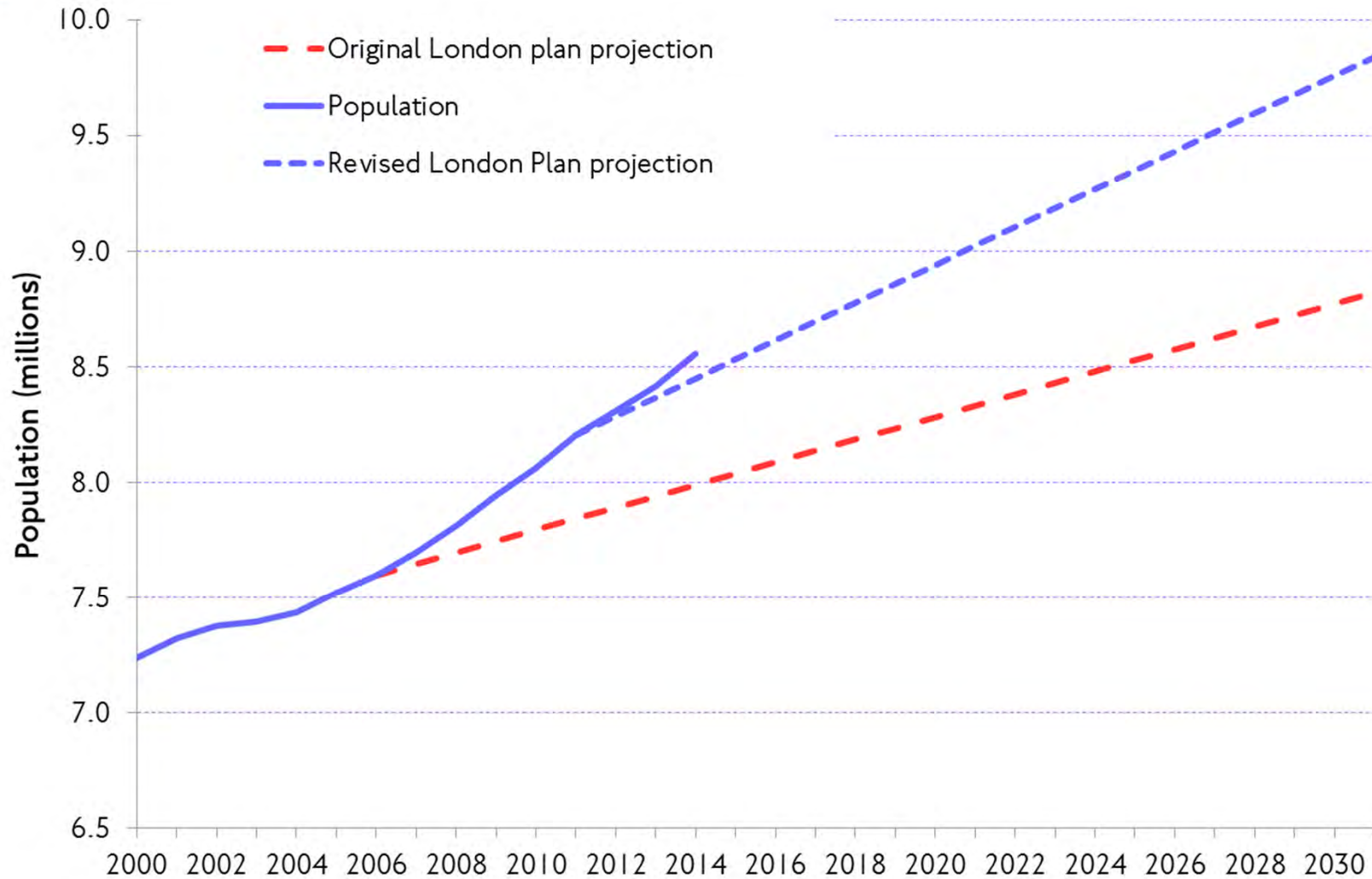


CREATE – Stage 3 city reflections

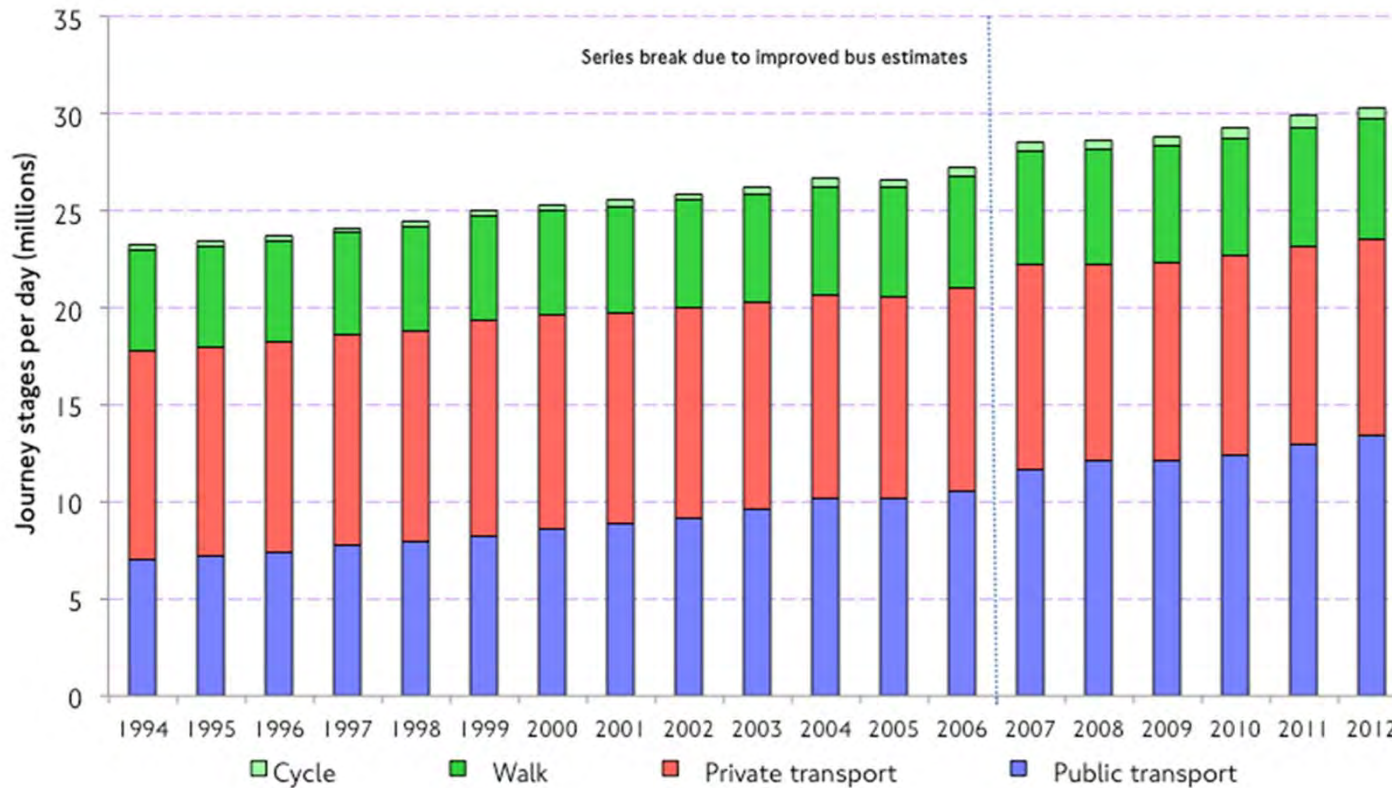
Charles Buckingham
Transport for London (TfL)

23 September 2015

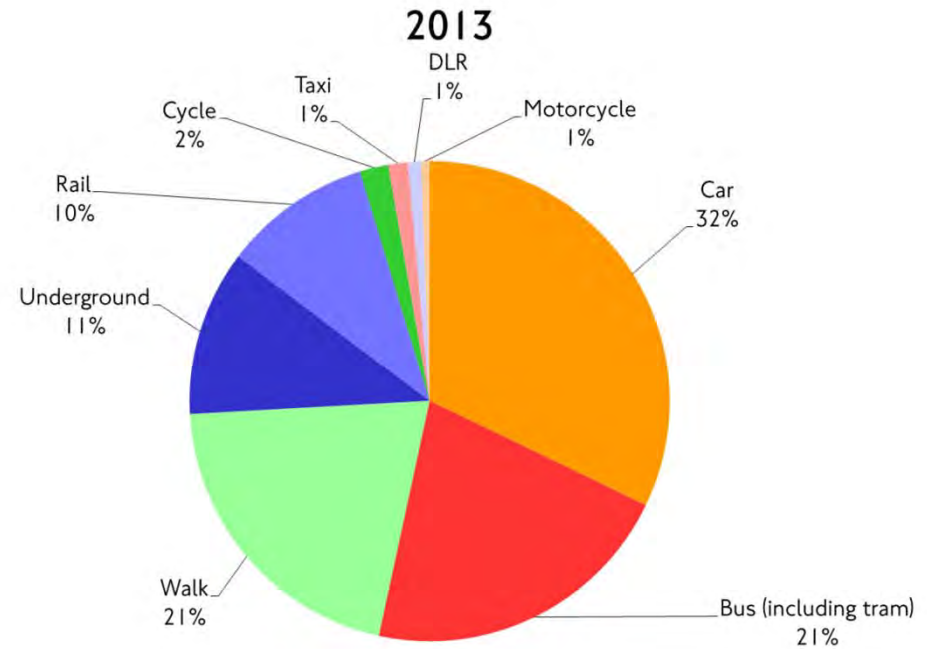
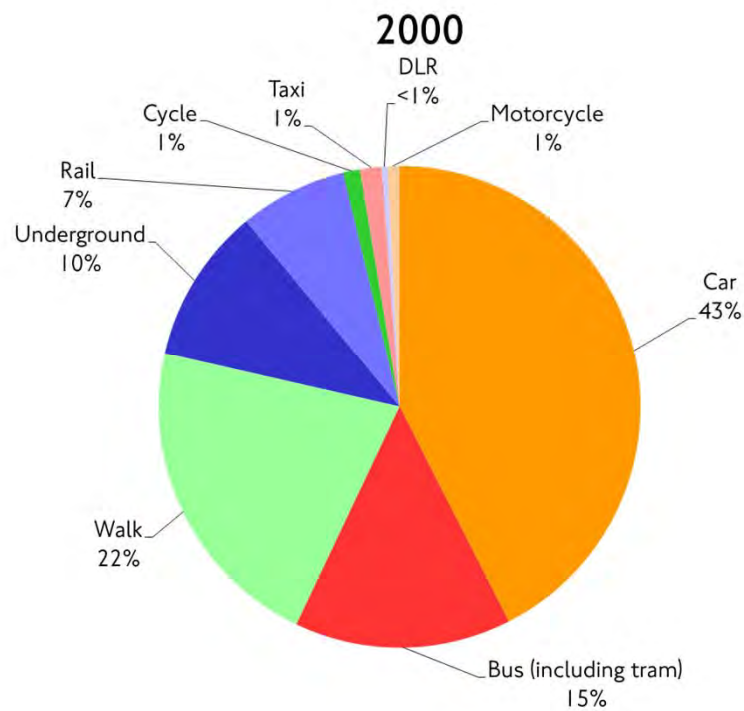
Rapid population growth



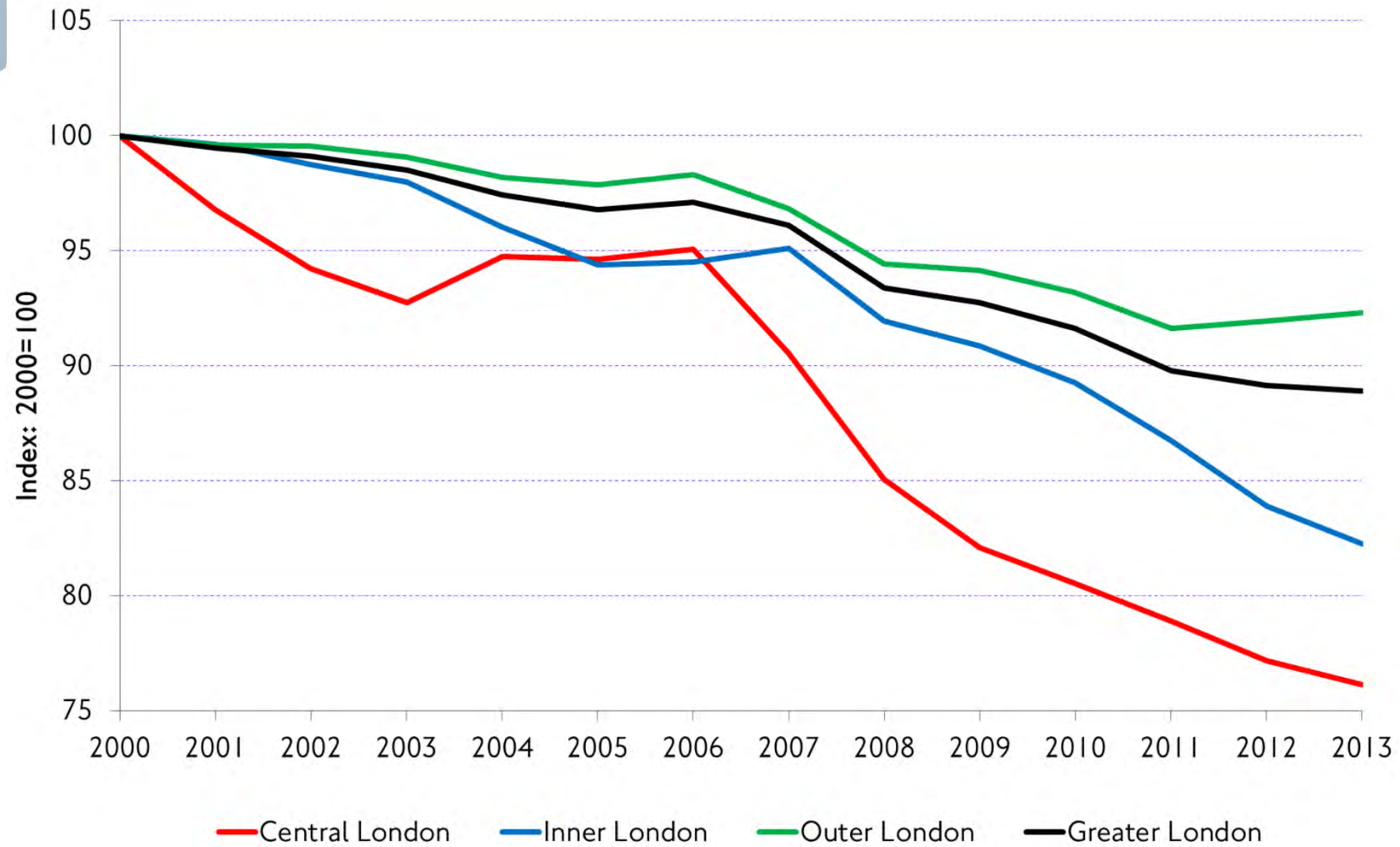
Increasing demand for travel



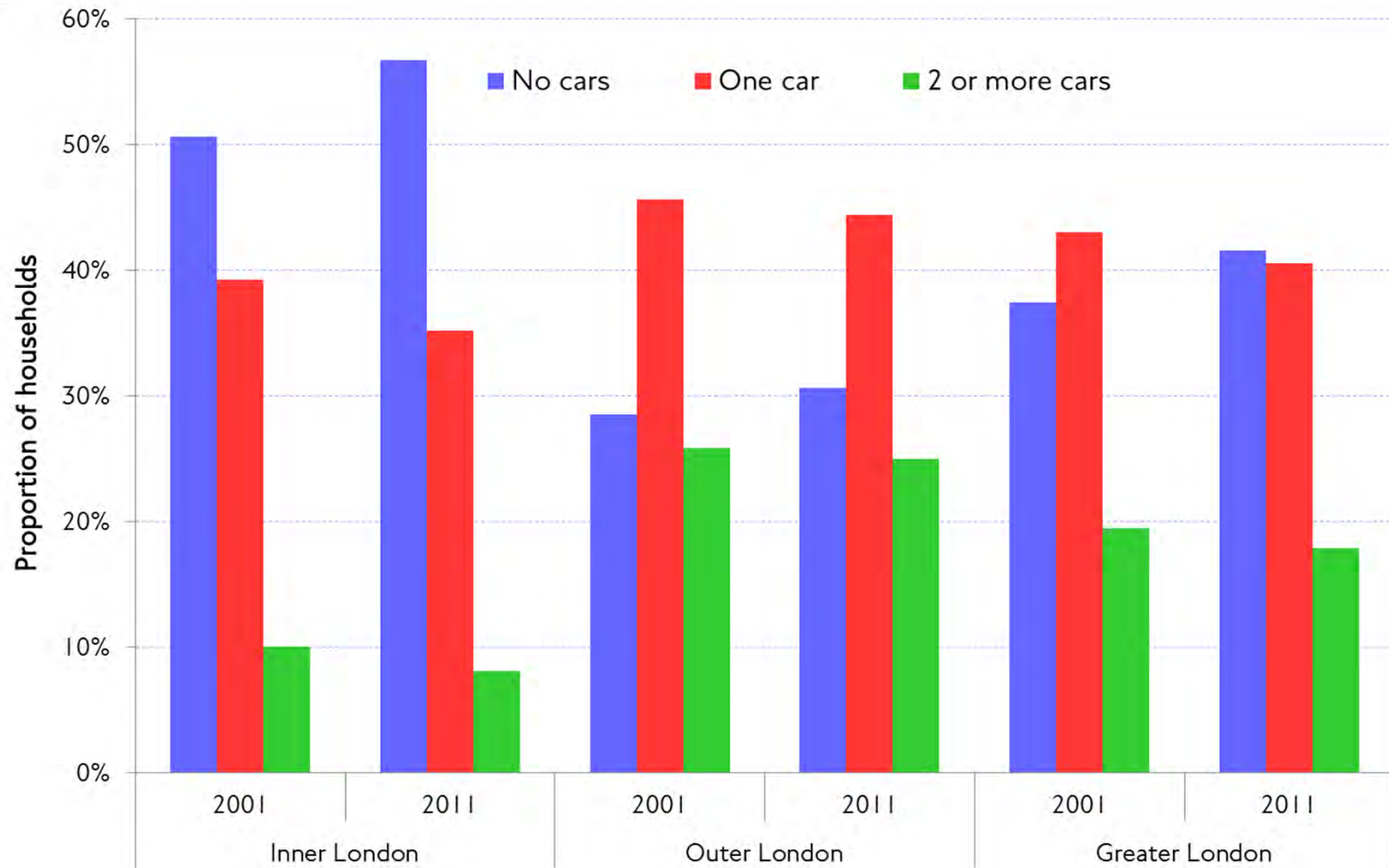
A 10% net shift in mode share



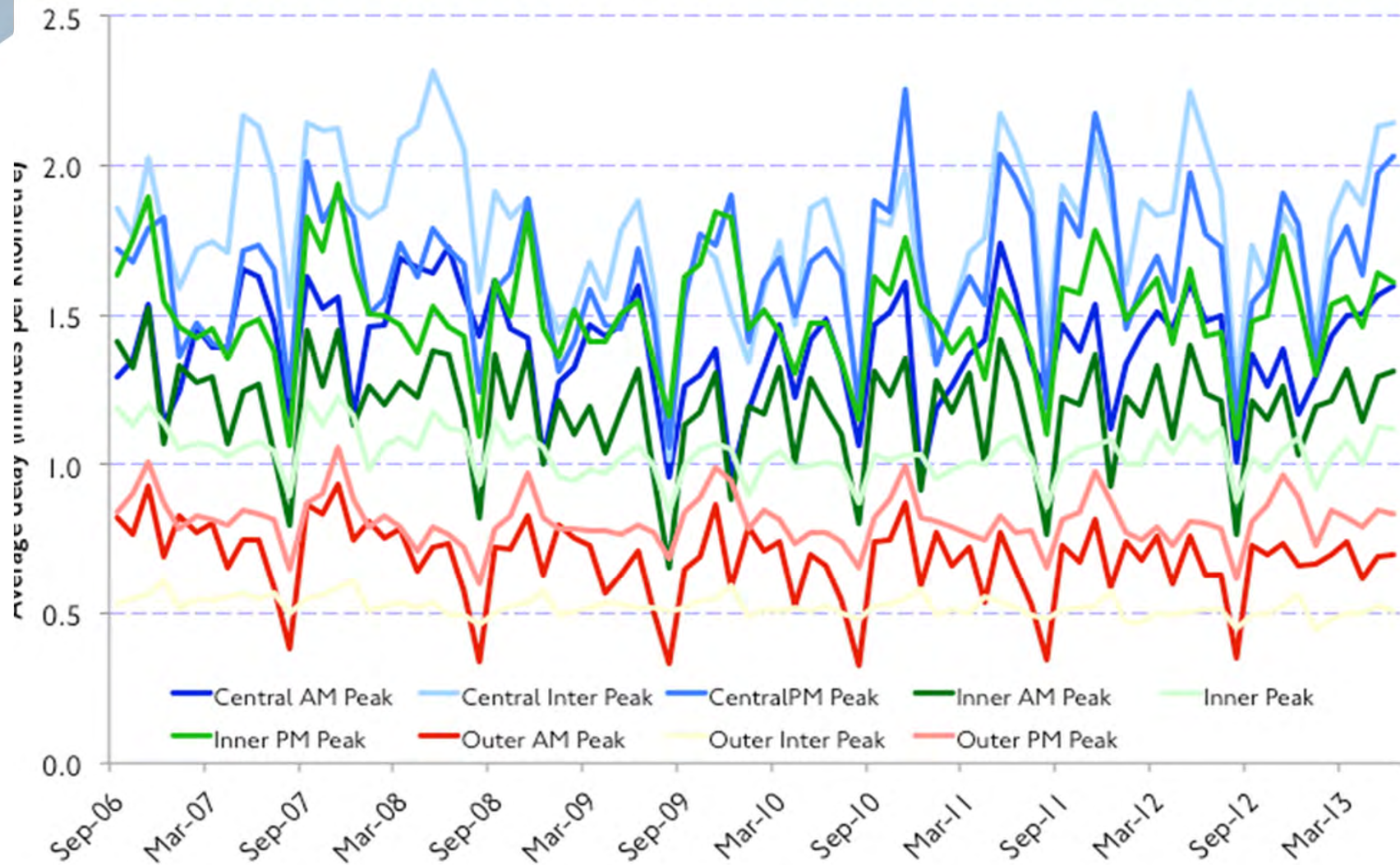
Decline in road traffic



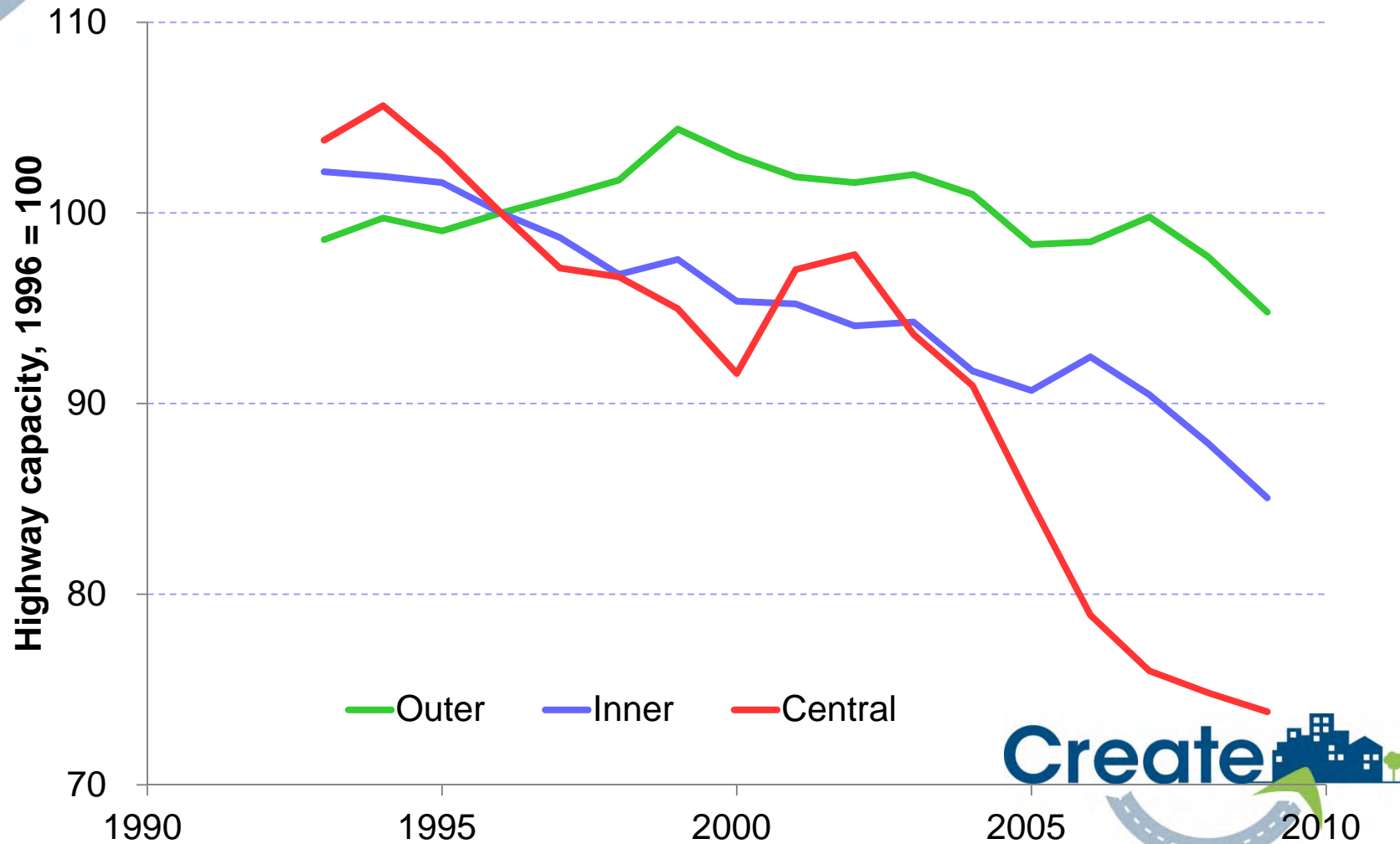
Fall in car ownership



'Stable' traffic congestion



Reduced road capacity





Summary

- A lot of shared characteristics – but participating cities are actually very different - even Stage 3.
- Harmonising data therefore a major challenge – but this is not actually the interesting bit !
- Importance of qualitative analysis – governance/institutions but also history/culture.
- Clear that Stage 3 has a lot to offer Stage 1 – but Stage 1 also diverse and interesting in their own right and have things to offer Stage 3.
- Stage 1 – knowledge transfer/shadowing. Clear that need to carefully focus this.
- Stage 3 shared question – where to go next (Stage 4).
- Real opportunity for influential change.
- Excellent level of engagement !

